

Plug - in instructions

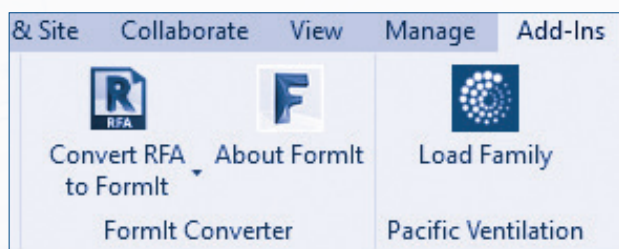
We've taken the work out of picking the best fans in the market! The Pacific Ventilation REVit plug-in provides improved speed and efficiency for HVAC REVit users by eliminating data transposition errors. Just drag and drop - all the fan data is there—no need for time consuming manual input.

Plug-in and REV-it families are available on our website.

[Click here to download](#)

Set up instructions

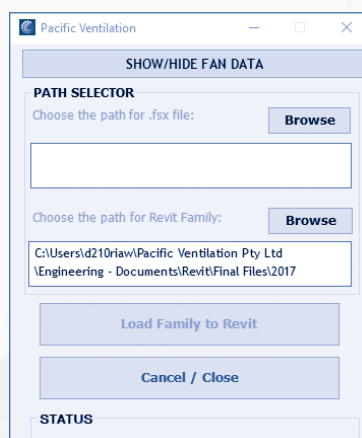
1. **Download** the plug-in from the link above
2. Double click and **run** the install file
3. **Open REVit** and load an existing project or start a new project
4. From the top menu go to **Add-Ins**



5. Click on **Load Families**

6. Browse for a 'fsx' (fansSelect selections)

7. Browse the families **directory**



8. **Click** load families to **REVit**
9. Once loaded you will see the message below



10. You can now find your fan models in the REVit browser under the Families/Mechanical Equipment tree menu.

